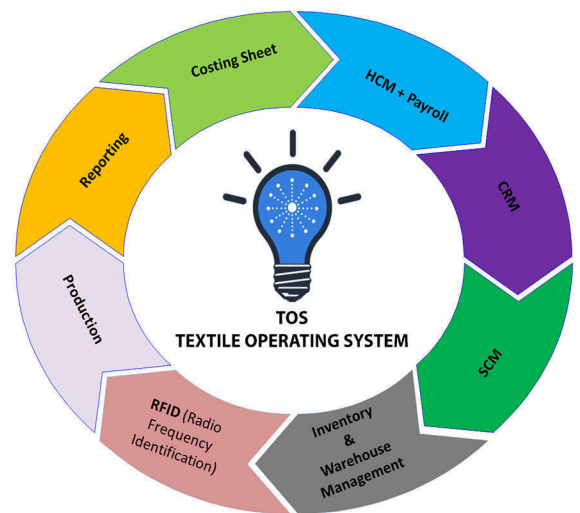


TOS

(Textile Operating System)

TOS (Textile Operating System) Application Software is the solution of choice for Textile Exporters & Apparel Manufacturers looking for a global footprint with dynamic configuration modeling needs and retaining your corporate governance standards. It is a complete solution for mid-size to large-size enterprises. TOS attempts to integrate all departments & functions across a textile company on to a single computing system that can serve all those different departmental needs.

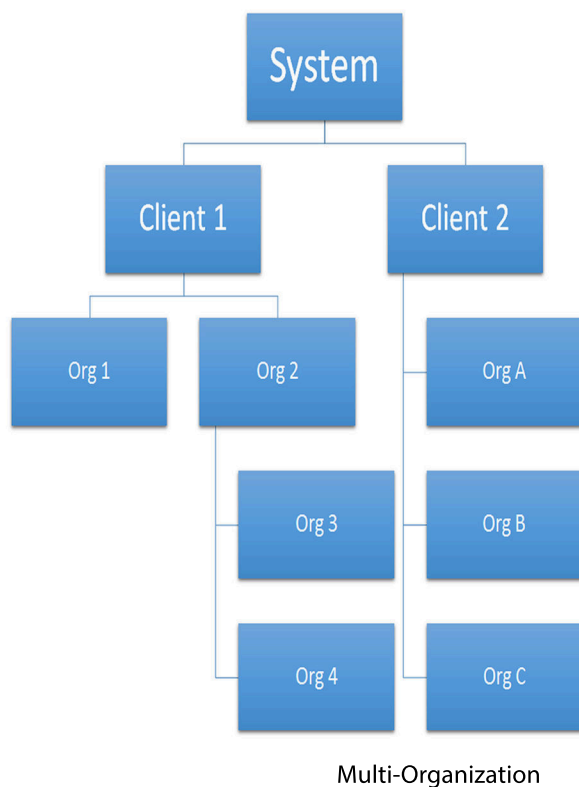
- Customer Relationship Management (CRM)
- Supply Chain Management (SCM)
- Warehouse\Inventory
- Financial Management
- Human Capital Management (HCM)
- Planning Activities (Dyeing, Stitching and Weaving)
- Export Department Activities
- Master Data Management
- Production Order Management
- End User Security Management
- Dashboard Management (with live Graphs)
- Technology driven ADD-ON Connectivity
- Production Order Tracking
- Production Cycle



Challenges



Managing SKU and Bill of Material complexity has always been a challenge for the textile managers across the whole supply chain system. With Inteinno dimensional capability to integrate, you will be able to manage your data at the end item level to successfully forecast, plan, and to manufacture your product, delivering the right product at the right time and controlling your inventories. Workflows patterns have been designed to make processes look more simpler and efficient throughout the whole supply chain system. Hence the automation at this scale of supply chain system can decrease cost, improve visibility to data and help improve the quality of decision making.



Data Level (Role Data Access)

- Personal Lock
- Record Access
- Table Access
- Column Access
- Report Access
- Export Access

Role Level (Organization Access)

- Window Access
- Process Access
- Form Access
- Task Access
- Doc Action Access

Address

Bahria Town Tower Tariq Road,
Opposite, Allah Wali Chowrangi,
Block 2 PECHS, Karachi,
Karachi City, Sindh.

Contact

Email : contact@inteinno.com
Email : asad.qazi@inteinno.com
Cell : +92-345-3240058



Powered by Java